



Overview

Lauxes Grates is one of Australia and New Zealand's most exclusive designers and manufacturers of versatile linear indoor/outdoor drainage solutions. Lauxes Grates supplies product to thousands of businesses and is growing daily. Through AUSPAC Distribution, Lauxes products are confidently supplied to the European, North American and Australasian markets.



Lauxes Grates offer:

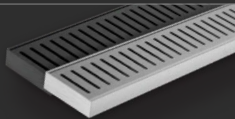
- High-quality manufactured grates, available in a variety of thicknesses and lengths.
- Grates & accessories made from triple-anodised aluminium, increasing corrosion resistance.
- A Lifetime Rustproof Warranty giving customers peace of mind for choosing Lauxes Grates.

Lauxes Grates' customisable options and ease of on-site installation make it a builder's choice for functionality, durability and affordability.

Product Range

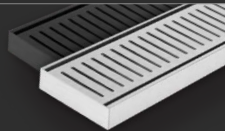
All aspects of Lauxes grates and their corresponding accessories are made of triple anodised aluminium. They can be easily cut down to size on site or joined beyond 5.6m with Lauxes joiners. All Lauxes products have been customised and developed to the highest level of WaterMark Certification in accordance with the Australian Technical Specifications WMTS.040.

STANDARD GRATES



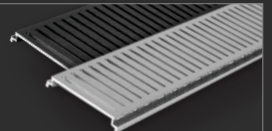
The original of the Lauxes Grates range, the Standard floor grates are available in different widths and colours.

NEXT GENERATION



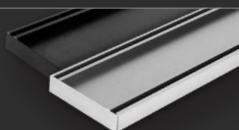
Available in multiple depths and colours, this anti-tracking, anodised aluminium grate is ideal for multiple applications.

STORM WATER



Lauxes Grates latest development: triple-anodised aluminium top trays ideal for replacing old 128mm plastic storm grates.

TILE INSERT



The most popular line of the Lauxes Grates collection, the tile insert range offers a range of depths to suit most applications and tiles.

GRATE ACCESSORIES



Lauxes Grates has a large range of accessories made especially for its versatile grates, whether it end caps, waste outlets, joiners or adhesive.

Product Features

HIGHLY DURABLE FOR ANY APPLICATION

Lauxes Grates provide elegant water drainage solutions for indoor and outdoor applications. They come in a range of depths and widths, ideal for showers, bathrooms, balconies, pools and much more.

SEAMLESS INTEGRATION

Any tile will fit with Lauxes grates, giving you the scope to integrate our products into your design considerations.

FAST AND RELIABLE DELIVERY

Lauxes products are readily available through several logistics networks that extend across Australia, New Zealand, Canada, Europe, and Asia. We are committed to getting orders to you quickly and without issue.

QUALITY SUPPORT

Together, Lauxes Grates and Auspac Distribution provide in-depth knowledge of the product range and can advise you on the best solutions to suit your requirements.

TRIPLE ANODISED ALUMINIUM

Lauxes grates & accessories are not only built from high quality aluminium, but are triple-anodised, increasing their resistance to corrosion.

WARRANTY

All Lauxes grates are UV Stable and come with a 25-year warranty against fading, in addition to a Lifetime Rustproof Warranty.

More Information



What is Anodised Aluminium?

Anodised aluminium is an electrochemical where the surface of the aluminium and its alloys are coated to a porous aluminium oxide. Anodising is used to increase the thickness of the natural oxide layer on the surface of the metal parts. Anodising increases common erosion resistance and wear resistance, making it the second hardest substance known to man (only to be surpassed by diamond). The oxide on aluminium is naturally corrosion resistant, making it a very hard, abrasive resistant and an insulator.

Why Anodise?

Anodising is an electrolytic process for producing thick oxide coating producing a bonded finish that resists corrosion, abrasion and exposure to high industrial, marine and other severe environments. The result of the finish can include either a clear finish or coloured anodic films which will retain and enhance its inherent beauty of the aluminium. Its robust features and aesthetics of the anodised aluminium makes it ideal for both residential or commercial projects.

